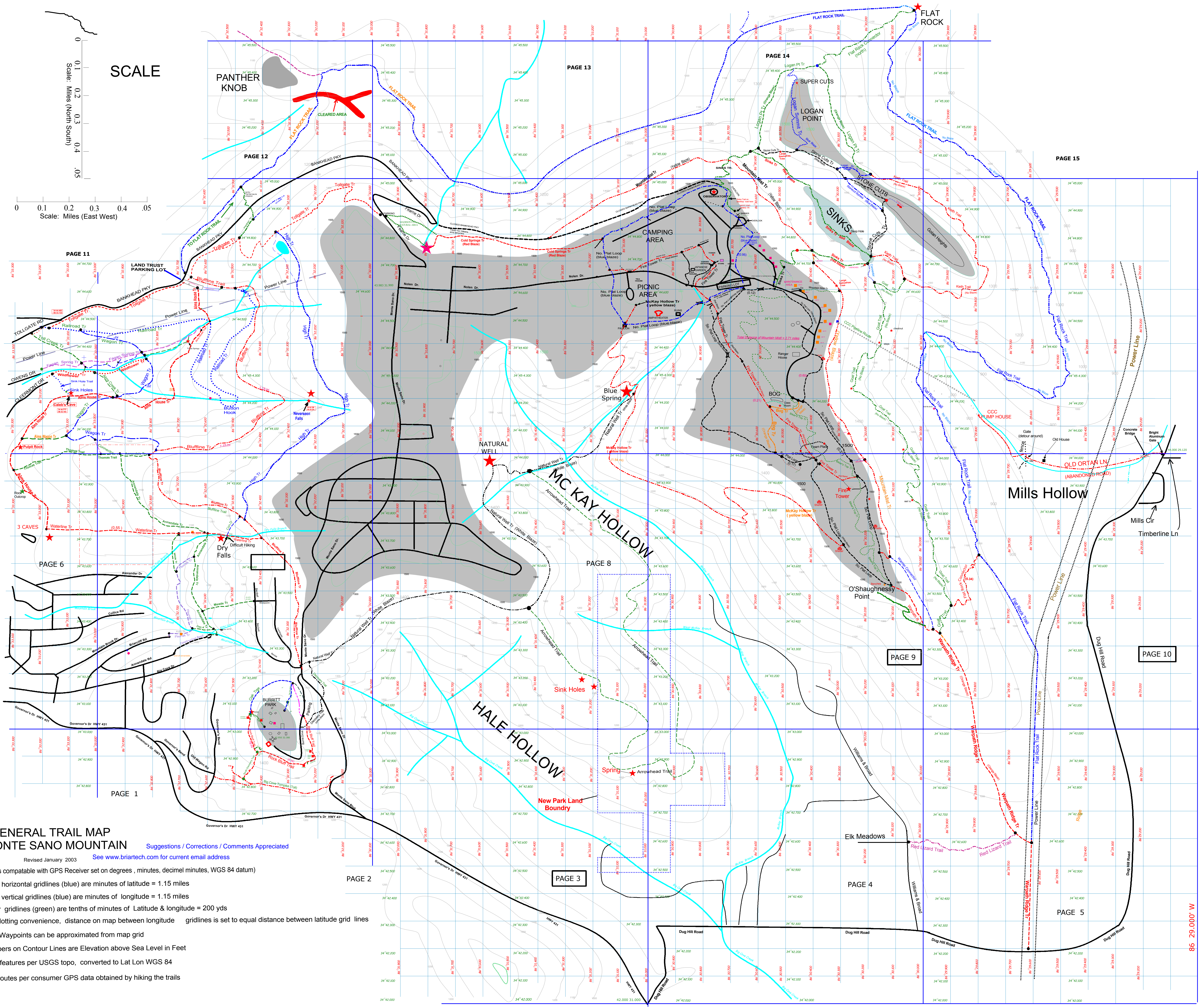
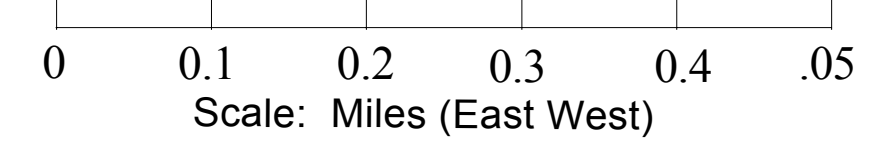


SCALE



**GENERAL TRAIL MAP**  
**MONTE SANO MOUNTAIN**    Suggestions / Corrections / Comments Appreciated  
 Revised January 2003    See [www.briartech.com](http://www.briartech.com) for current email address

- Grid is compatible with GPS Receiver set on degrees , minutes, decimal minutes, WGS 84 datum)
- Major horizontal gridlines (blue) are minutes of latitude = 1.15 miles
- Major vertical gridlines (blue) are minutes of longitude = 1.15 miles
- Minor gridlines (green) are tenths of minutes of Latitude & longitude = 200 yds
- For plotting convenience, distance on map between longitude gridlines is set to equal distance between latitude grid lines
- GPS Waypoints can be approximated from map grid
- Numbers on Contour Lines are Elevation above Sea Level in Feet
- Land features per USGS topo, converted to Lat Lon WGS 84
- Trail routes per consumer GPS data obtained by hiking the trails

86 29.000' W