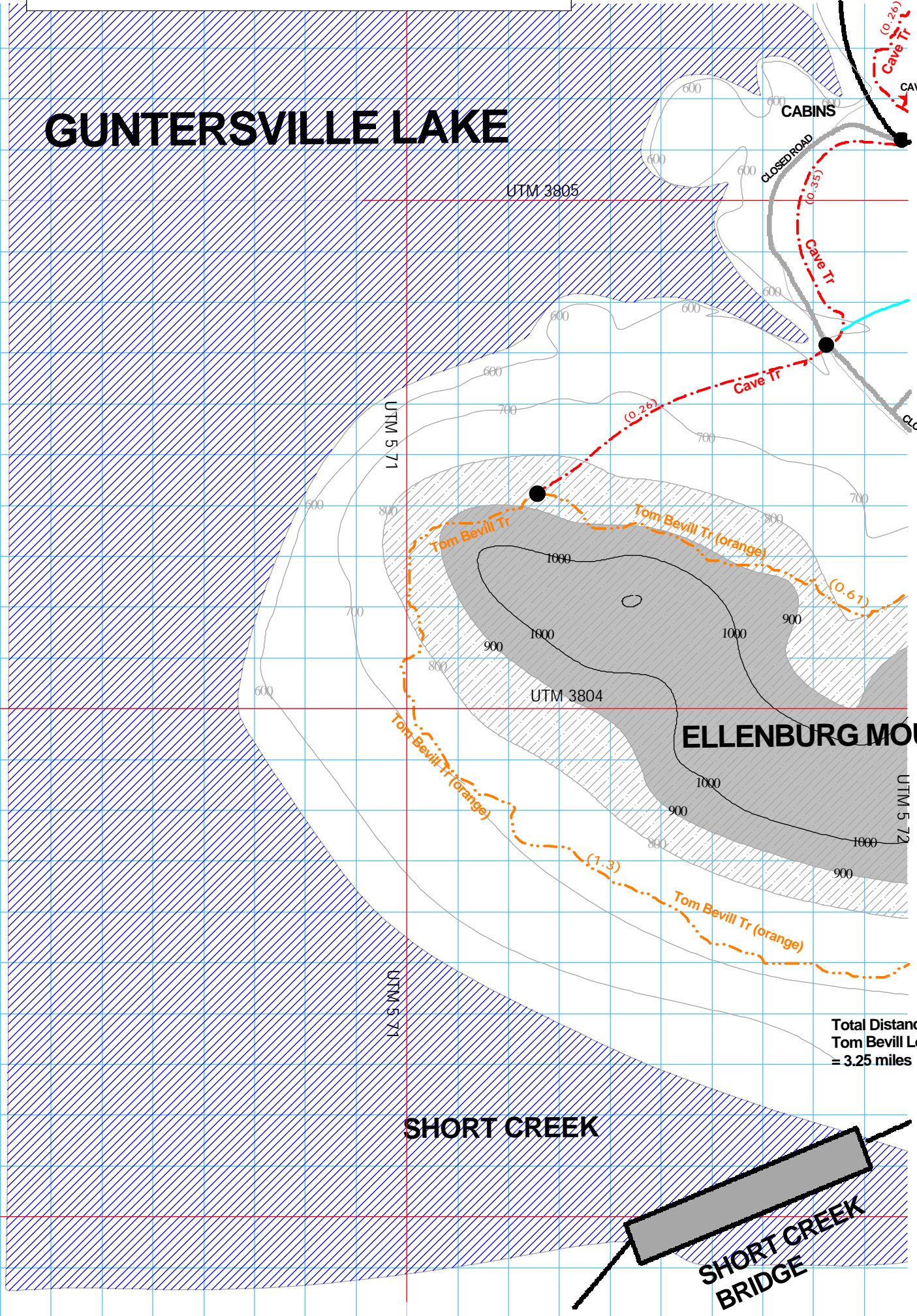


to the old cemetery on Graveyard Hill.

GUNTERSVILLE LAKE

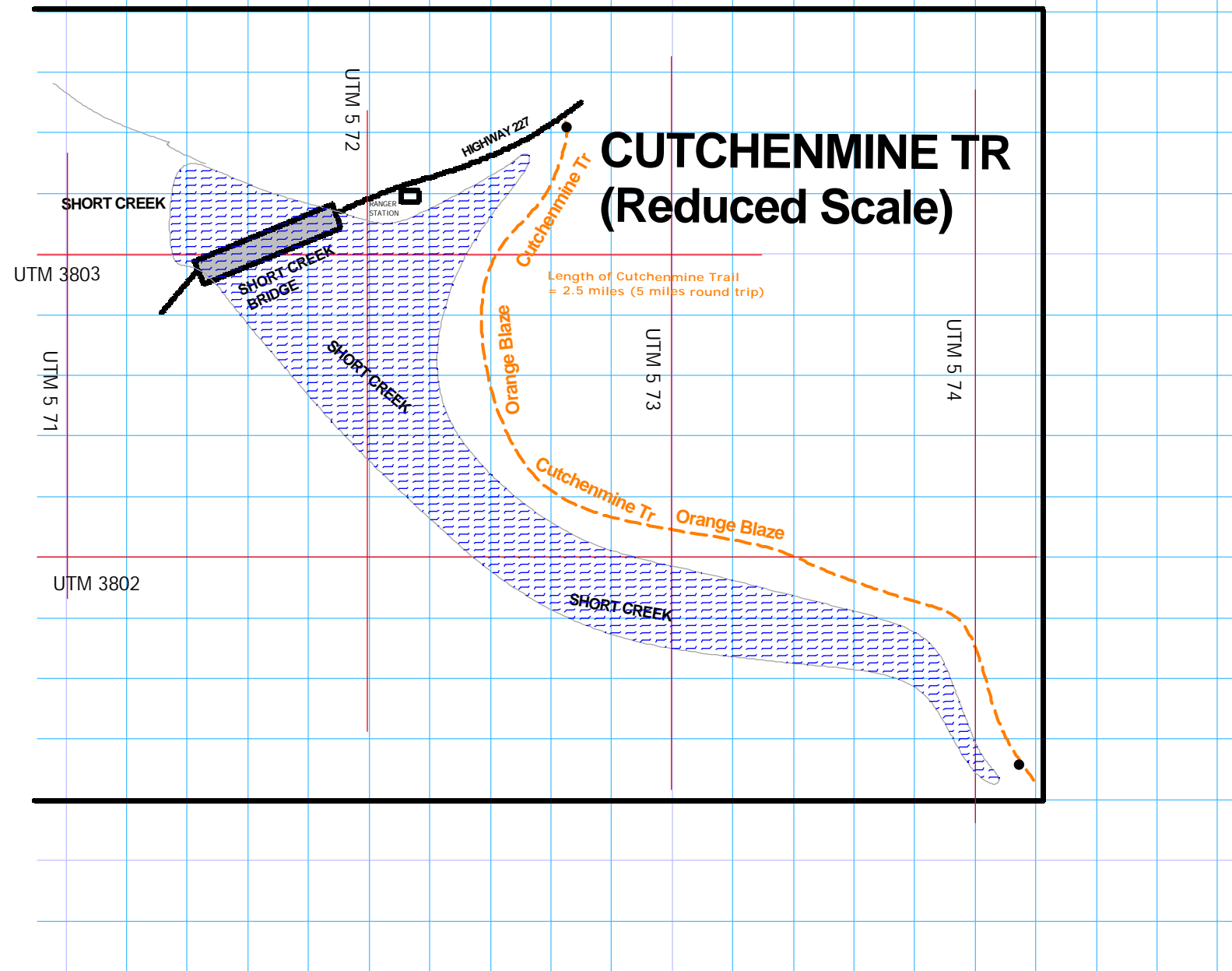
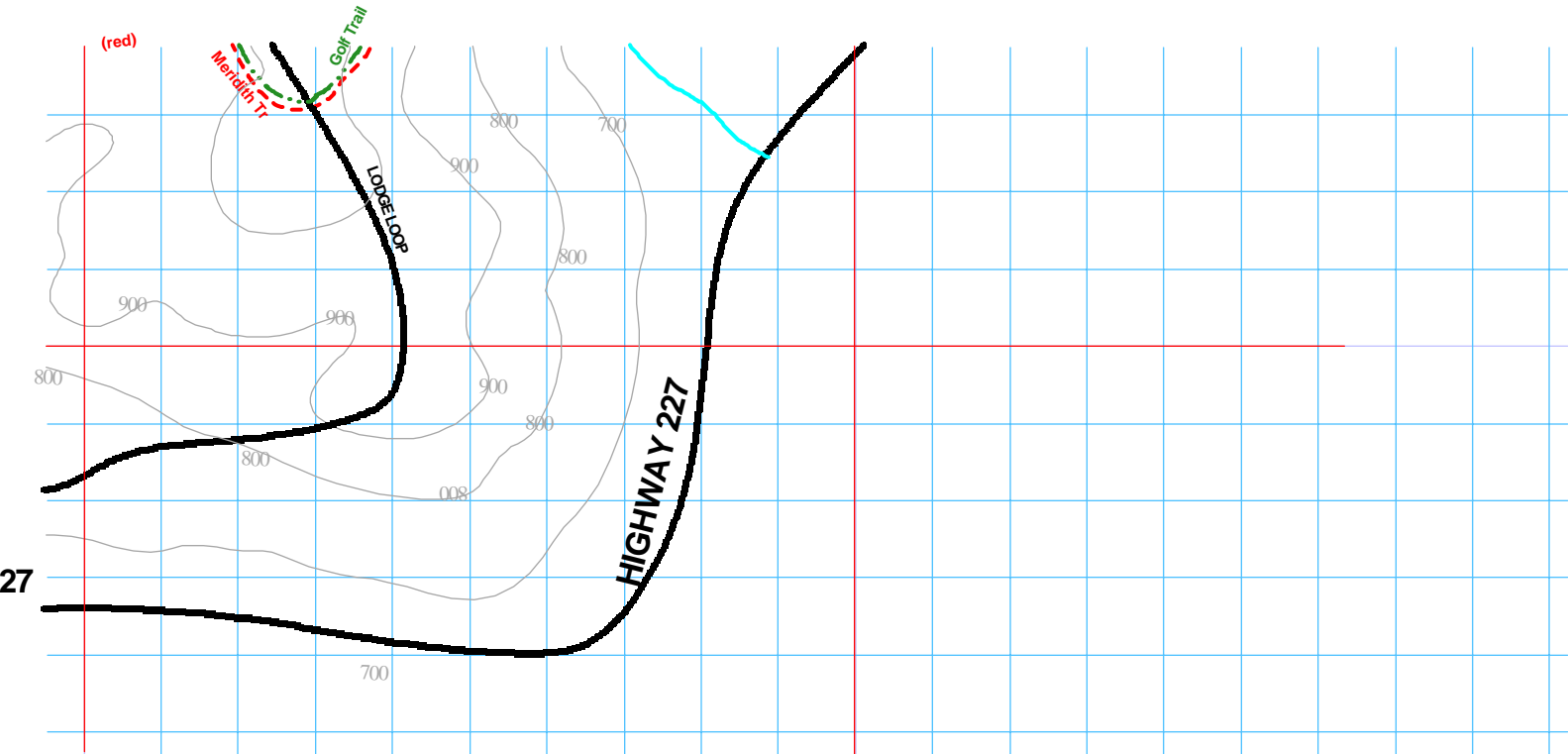


Total Distance
Tom Bevill Loop
= 3.25 miles

SHORT CREEK

SHORT CREEK BRIDGE

ELLENBURG MOUNTAIN



TRAILS

GUNT HIK

TOM BEVILL LOOP 3 miles. Orange Blaze. Begins across from Park Office on Highway 227. Encircles Ellenburg Mountain

CUTCHENMINE TRAIL, 2.5 Miles (5 round trip). Orange. Entrance on Highway 227 just past Park Office On Highway 227. Follows an old coal min road, along Short Creek.

CAVE TRAIL 1 Mile. Red blaze. Extends from Tom Bevill Trail to Loop Trail. Goes by a small cave. Beautiful rock formations and wild flowers. Crosses Park Road. Cave is just of the road on the right side.

CASCADE TRAIL 1 mile. Blue Blaze. Access from the back side of the Nature trail across from the Lodge. Follows a natural watershed with large boulders, pools, cliffs, wild azaleas. Marvelous view. Links up with Waterfall, Old Still Path, Meredith and Terrell Trails.

TERRILL TRAIL 2 Miles. (round trip) Yellow Blaze. Begins on road to campground. Trail climbs and circles Graveyard hill. The trail includes two loops. A cemetery is at the north end of the trail. The Terrill trail on top of Graveyard Hill can also be accessed by King's Chapel from the Park road. And also by a connector trail from the closed blacktop on the west side of the hill.

OLD STILL PATH 1/2 mile. Orange Blaze Short trail connecting Waterfall with Cascade. Passes the best preserved old whisky still in the park.

MOONSHINE TRAIL Orange Blaze 1.5 miles. May be entered from Park Road (Same place as Waterfall) Passes old still site. Connects with Loop Trail below chalets. Crosses Park road leading to lodge.

LOOP TRAIL 1.5 Miles. Blue Blaze. Entrance across from Country Store at Campground. Beautiful limestone formations, large trees and ferns. Has Champion Chestnut Oak tree. May also be accessed by taking Chalet Trail down from last Chalet.

LICKSKILLET TRAIL 2.5 miles Orange Blaze. Connects campground to Town Creek. Follow an old Indian path. Comes out on Hwy 227 just before Town Creek Bridge. Crosses main park road and a service road. Large beech trees and spring wildflowers. A loop from the campground can be done by taking Lickskillet to Meredith Trail, then Seal's Trail back to camping area. About 4 miles total.

LODGE TRAIL 1 mile. Blue Blaze. Connects Lodge with Campground. Upper entrance by lodge playground. Lower entrance across from Country Store at Campground. Beautiful limestone formations, large trees and ferns. Has Champion Chestnut Oak tree. Runs into Lickskillet Trail directly above campground. Deer are often seen on this trail

DANIEL'S TRAIL 3/4 mile. White Blaze Connects Loop trail and Old Lickskillet. Rocks, deer and large trees

OLD LICKSKILLET TRAIL 1 mile. Orange Blaze. An old pioneer road with a foundation of an old log cabin directly above campground. May be entered at Seal's Trail in Campground, on the park road above campground, or on park road at top of hill.

NATURE TRAIL 1/2 mile, Red Blaze. Directly across from Lodge. Access to Cascade and Waterfall Trails are on back side of this trail.

MERIDITH TRAIL 2 miles Red Blaze Extends from Cascade Trail at cliffs to Town Creek Bridge. Crosses rocky stream, skirts golf course, Intersects Lickskillet Trail.

SEAL'S TRAIL 2 miles. Blue Blaze. Follows Town Creek from bridge at Hwy 227 to campground. Gorgeous fall color with maple, hickory and beech. Named for Rex and Ruth Seale who have build our extensive trail system and who continue to mark and maintain these trails. In 1990 the Seals received a Certificate of Merit from the Governor.

GOLF COURSE CIRCLE Yellow Blaze. A 3.5 mile loop following the circumference to the golf course. This trail begins at the tennis courts across from the lodge and ends at the lodge playground. This trail crosses a small stream

KING'S CHAPEL TRAIL Red Blaze. A short .8 mile hike from the park road to the old cemetery on Graveyard Hill.

NOTES:

Grid is compatible with
(NAD 27 datum)

Distance between each

Distance between each

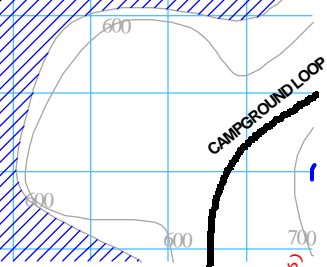
Numbers on major grid
USGS Topographic

GPS waypoints can be

Numbers in parentheses

Numbers on contour li

Trail Map Index <http://>
Y



INTERSVILLE STATE PARK HIKING TRAIL SYSTEM

GUNTER

Compatible with GPS receiver Set on UTM Coordinate System, (datum)

Distance between each major grid line (red) = 1000 meters

Distance between each minor grid line (blue) = 100 meters

Major grid lines are UTM coordinates per geographical maps

Distances can be approximated from map grid

Distances in parenthesis are distance between junctions in miles

Contour lines are elevation above sea level in feet

Website: <http://members.aol.com/yblitz/msmap.htm>
 Email: Yblitz@aol.com

